

# MINIMAL TRACK



ARKOSLIGHT®

**THE ONLY ONE  
REDDOT INNOVATIVE PRODUCT**

Minimal Track was the single lighting product to receive this recognition in 2020.

"The technical characteristics of Minimal Track distinguish it from the rest of the lighting products on the market", Red Dot Design Award Jury.

Minimal Track ha sido el único producto de iluminación que ha recibido este reconocimiento en 2020.

"Las características técnicas de Minimal Track lo distinguen del resto de productos de iluminación del mercado", Jurado Red Dot Design Award.

Minimal Track a été le seul produit d'éclairage à recevoir cette reconnaissance en 2020.

"Les caractéristiques techniques de Minimal Track le distinguent du reste des produits d'éclairage sur le marché", Red Dot Design Award Jury.

Minimal Track è l'unico prodotto nella categoria illuminazione ad aver ricevuto questo riconoscimento nel 2020.

"Le caratteristiche tecniche del Minimal Track lo distinguono dagli altri prodotti di illuminazione sul mercato", Giuria Red Dot Design Award.

Minimal Track war das einzige Beleuchtungsprodukt, das diese Anerkennung im Jahr 2020 erhielt.

"Die technischen Merkmale von Minimal Track unterscheiden es von den anderen Beleuchtungsprodukten auf dem Markt", Red Dot Design Award Jury.

# MINIMAL TRACK

Designed by Rubén Saldaña



reddot winner 2020  
innovative product



reddot winner 2020  
lighting design



Bronze Delta  
ADI Awards 2020



archiproducts  
DESIGN AWARDS  
WINNER 2020



ARKOSLIGHT®



## MINIMAL TRACK

The most incredible miniaturized track system on the market

El sistema de carril miniaturizado más increíble del mercado.

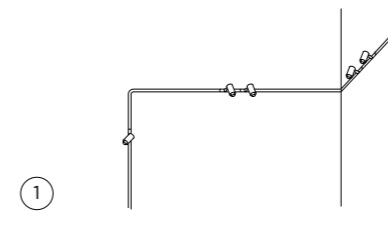
Le système de rail miniaturisé le plus incroyable du marché.

Il sistema a binario miniaturizzato più incredibile del mercato.

Das unglaublichste miniaturisierte Schienensystem auf dem Markt.

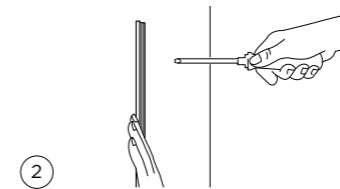


## MINIMAL TRACK INSTALLATION



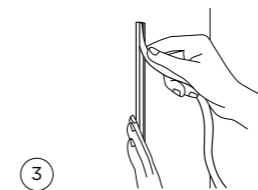
①

Create your own design with Minimal Track.  
 Cree su propio diseño con Minimal Track.  
 Créez votre propre design avec Minimal Track.  
 Crea il tuo design con Minimal Track.  
 Erstellen Sie Ihr eigenes Design mit Minimal Track.



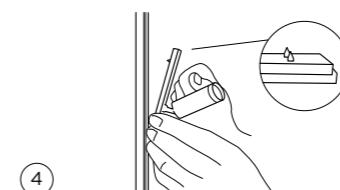
②

Fix your setting into the wall.  
 Fije la estructura en la pared.  
 Fixez votre composition sur le mur.  
 Fissa i sostegni alla parete.  
 Befestigen Sie den Rahmen an der Wand.



③

Electrify the entire path with the flexible rubber.  
 Electrifique todo el recorrido con la goma flexible.  
 Électrifiez l'ensemble du chemin avec le cable en caoutchouc flexible.  
 Elettrifica la linea con il cavo flessibile.  
 Elektrifizieren Sie den gesamten Weg mit dem flexiblen Band.



④

Place the luminary and fix it.  
 Coloque la luminaria y asegúrela.  
 Placez le luminaire et sécurisez le.  
 Collocare la luminaria e fissarla.  
 Die Leuchte platzieren und sichern.

MINIMAL TRACK  
COMPONENTS

①

PROFILE



②

RUBBER CABLE



③A

CORNER 90° 1 PLANE ROUNDED



③B

CORNER 90° 1 PLANE



④

CORNER 90° 2 PLANES



# MINIATURIZATION

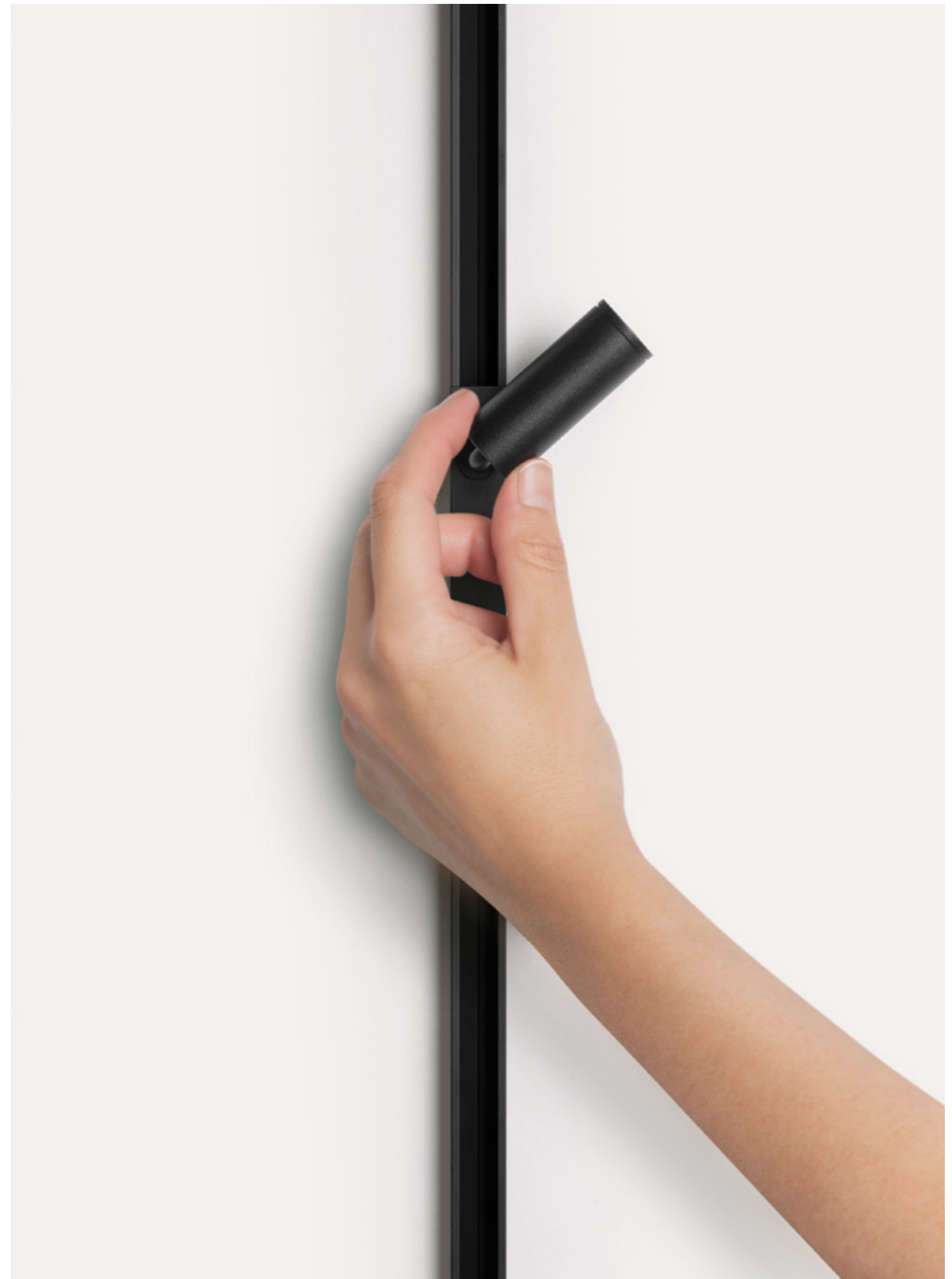
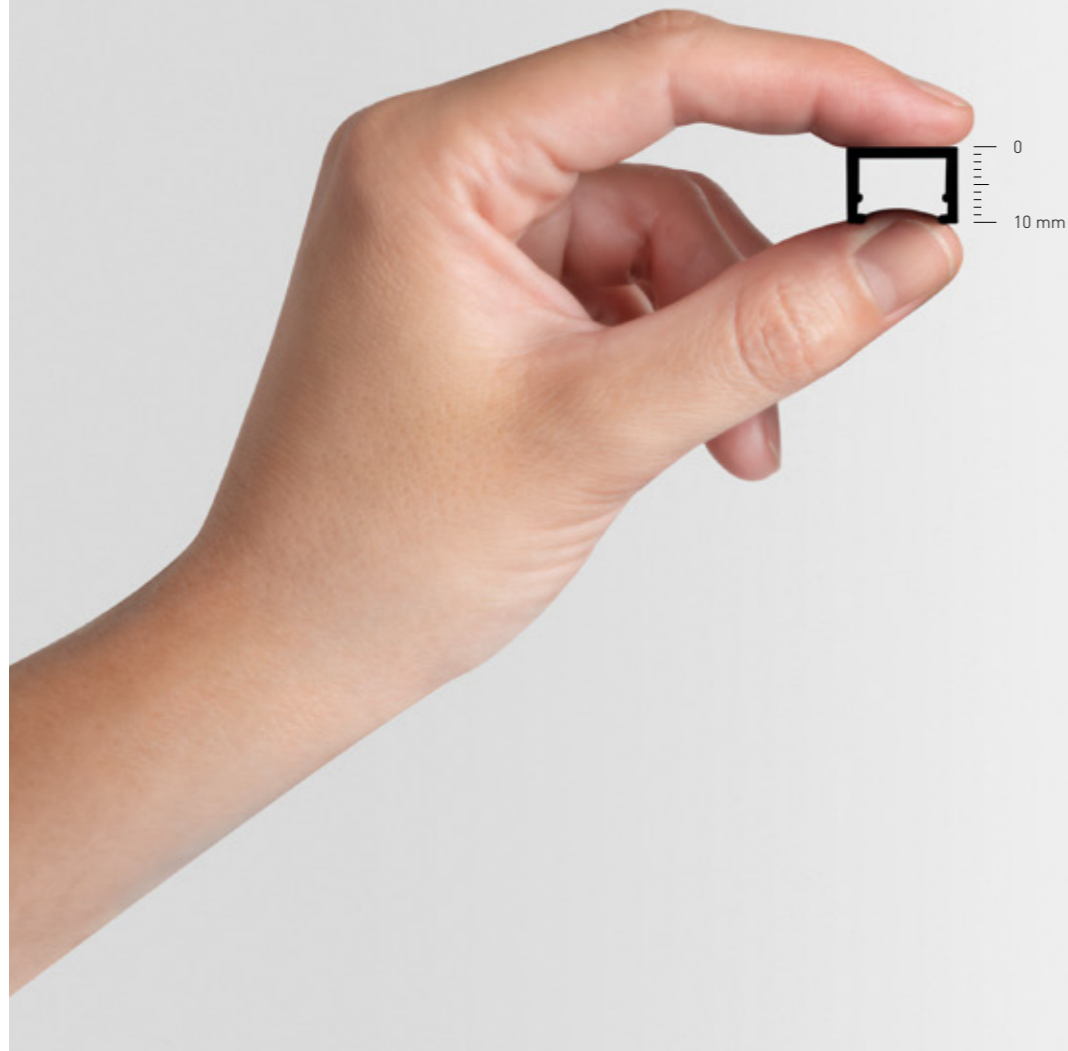
Maximum miniaturization of track, luminaires and components.

Miniaturización máxima del carril, luminarias y componentes.

Miniaturisation maximum du rail, des luminaires et leurs composants.

Massima miniaturizzazione di binario, apparecchi e componenti.

Maximale Miniaturisierung von Schiene, Leuchten und Komponenten.



## VISUAL TRIMLESS

Minimal Track is as easy to install as a surface system, but its looks like a trimless track due to its small size and its geometric simplicity.

Minimal Track es fácil de instalar como un sistema de superficie, pero su apariencia es la de un carril *trimless* por su diminuto tamaño y su simplicidad geométrica.

Minimal Track est facile à installer comme système de superficie, mais son apparence est celui d'un rail *trimless* par sa taille réduite et sa simplicité géométrique.

Il Minimal Track è di facile installazione come un binario di superficie, avendo però le sembianze di un binario *trimless* grazie alle sue ridotte dimensioni e la sua semplicità geometrica.

Minimal Track ist einfach als Oberflächensystem zu installieren, sieht jedoch aufgrund seiner geringen Größe, mattschwarzen Oberfläche und geometrischen Einfachheit, wie eine Trimless Track aus.



## PURE DESIGN

Minimal Track offers an integral visual uniformity. The tracks are inside the flexible rubber and the system is transformed into a black line drawn through the architecture.

Minimal Track ofrece una uniformidad visual total. Las pistas conductoras están insertas en la goma flexible y el sistema se transforma en una línea negra trazada en la arquitectura.

Minimal Track offre une uniformité visuelle totale. Les pistes en cuivre sont insérées dans le flexible conducteur et le système est transformé en une ligne noire tracée dans l'architecture.

Il Minimal Track offre la massima uniformità visiva. Le guide sono inserite nel flessibile conduttore e il sistema si trasforma in una linea nera tracciata nell'architettura.

Minimal Track bietet vollständige visuelle Gleichmässigkeit. Die Kupferspuren werden in den flexiblen Gummi eingesetzt und das System wird in eine schwarze Linie umgewandelt, die in der Architektur gezeichnet ist.





## TRACK LEVITATION

A line of only 10 mm that floats and crosses the architectural space almost unnoticed. The mechanical components of the Minimal Track have been minimized to increase its visual lightness in the space: tensioners of only 0.6 mm, minimal supports ...

Everything, to achieve suspended lightness.

Una línea de tan solo 10 mm que flota y atraviesa el espacio arquitectónico casi desapercibida. Se han minimizado los componentes mecánicos de Minimal Track para incrementar su ligereza visual: tensores de sólo 0.6 mm, soportes mínimos...

Todo, para conseguir una percepción de liviandad suspendida.

Une ligne de seulement 10 mm qui flote et traverse l'espace architecturale de façon presque inaperçue. Les composants mécaniques du Minimal Track ont été minimisés pour augmenter sa légèreté visuelle: tendeurs de seulement 0,6 mm, support minimaux...

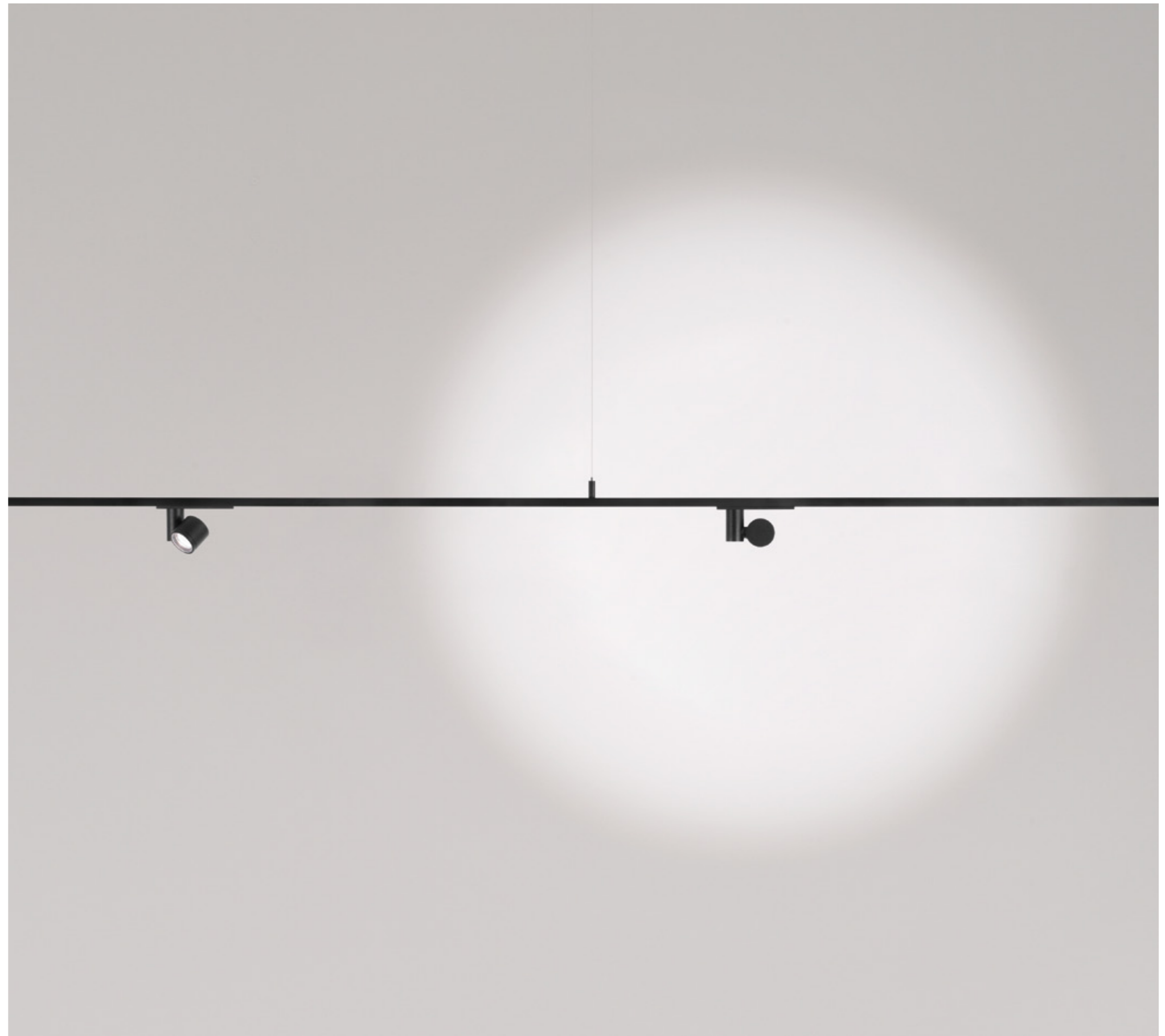
Tout pour avoir une perception de légèreté suspendue.

Una linea di soli 10mm che levita e attraversa lo spazio architettonico impercettibilmente. I componenti meccanici del Minimal Track sono stati minimizzati per incrementarne l'effetto visivo di leggerezza: sospensioni di solo 0.6mm, supporti minimi...

Tutto per ottenere una percezione di leggerezza e sospensione

Eine Linie von nur 10mm, die schwebt und den architektonischen Raum fast unbemerkt durchquert. Die mechanischen Komponenten des Minimal Track wurden minimiert, um seine visuelle Leichtigkeit zu erhöhen: Spannvorrichtungen von nur 0,6 mm, minimale Klammern...

Alles, um eine Wahrnehmung von schwebender Leichtigkeit zu erreichen.



MINIMAL TRACK

## ALASKA 24V

Alaska is the contemporary reinterpretation through technology and design of the classical incandescent filament light bulb.

Alaska es la reinterpretación contemporánea a través de la tecnología y el diseño de la clásica bombilla de filamento incandescente.

Alaska est la réinterprétation contemporaine à travers la technologie et le design de l'ampoule classique à filament incandescentt.

Alaska è la reinterpretazione contemporanea, tecnologica e di design, della classica lampadina a incandescenza.

Alaska ist die zeitgenössische Neuinterpretation durch Technologie und Desing der klassischen Glühbirne.



Private residence (Spain) | Design: Leticia Vila & Vicente Olivares

MINIMAL TRACK  
FIT 24V

Cylindrical geometry and essential forms, it stands out for its minimalistic looking and its functionality.

De geometría cilíndrica y formas esenciales, destaca por su minimalismo estético y su funcionalidad.

De géométrie cylindrique et de formes essentielles, il se distingue par son minimalisme esthétique et sa fonctionnalité.

Dalla geometria cilindrica e dalle forme essenziali, si distingue per il minimalismo estetico e l'alta funzionalità.

Die zylindrische Geometrie und die wesentlichen Formen zeichnen sich durch ästhetischen Minimalismus und Funktionalität aus.



MINIMAL TRACK  
PLUS Micro 24V

Plus Micro 24V is a projector that offers the possibility of expanding or concentrating the beam angle with just a smooth manual gesture.

Plus Micro 24V es un proyector que amplía o concentra el haz de luz con un suave movimiento manual.

Plus Micro 24V est un projecteur qui offre la possibilité d'agrandir ou de concentrer l'ouverture du faisceau lumineux avec un mouvement manuel doux.

Plus Micro 24V è un proiettore capace di ampliare o concentrare l'apertura della sorgente di luce con un leggero intervento manuale.

Plus Micro 24V ist ein Strahler der die Möglichkeit bietet, den Abstrahlwinkel mit einer sanften manuellen Bewegung zu erweitern oder zu konzentrieren.





MINIMAL TRACK

## SIX XS 24V

An innovative combination of reflector and lens represents its differentiated design -reduced and minimalist-. Compact size and first-rate technical features.

Una innovadora combinación de reflector y lente ha permitido su diferenciado diseño -reducido y minimalista-. Tamaño compacto y prestaciones técnicas de primer orden.

Une combinaison innovante du réflecteur et de la lentille a permis une conception différenciée -réduite et minimaliste-. Taille compacte et caractéristiques techniques de premier ordre.

Una combinazione innovativa di lente e riflettore ne ha consentito un disegno notevole -ridotto e minimalista-. Misure compatte e prestazioni tecniche di prim'ordine.

Eine innovative Kombination aus Reflektor und Linse hat ein differenziertes Design ermöglicht -reduziert und minimalistisch-. Kompakte Grösse und erstklassige technische Leistung.



MINIMAL TRACK

## TOP Micro 24V

The ideal micro downlight to be installed in projects where a discreet presence of the luminaire is sought on the scene.

El micro downlight idóneo para instalarse en proyectos donde se persigue una presencia discreta de la luminaria en la escena.

Le Micro Downlight est idéal à installer dans les projets où il est demandé une présence discrète du luminaire dans la mise en scène.

Il micro faretto perfetto in installazioni dove è richiesta una presenza discreta.

Das ideale Mikro-Downlight für die Installation in Projekten, bei denen eine diskrete Präsenz der Leuchte in der Szene erwünscht ist.



MINIMAL TRACK

## iO Micro 24V

iO Micro 24V is a miniaturized LED projector designed for accent lighting applications. Its small proportions allow it to be installed in spaces without generating an invasive presence on the scene.

iO Micro 24V es un proyector LED miniaturizado concebido para aplicaciones de iluminación de acento. Sus pequeñas proporciones le permiten ser instalado en espacios sin generar una presencia invasiva en la escena.

iO Micro 24V est un projecteur LED miniaturisé conçu pour les applications d'éclairage avec accentuation. Ses petites proportions lui permettent d'être installé dans des espaces sans générer de présence envahissante dans la mise en scène.

iO Micro 24V è un proiettore LED miniaturizzato concepito per illuminazione d'accento. Le sue piccole proporzioni ne consentono l'installazione senza una presenza invadente sulla scena.

iO Micro 24V ist ein miniaturisierter LED-Strahler, der für Akzentbeleuchtungsanwendungen entwickelt wurde. Seine geringen Proportionen erlauben es, ihn in Räumen zu installieren, ohne eine invasive Präsenz in der Szene zu erzeugen.



MINIMAL TRACK

## LINE Micro 24V

The very thin linear luminary with diffused light that stands out for its small dimensions and discretion.

La finísima luminaria lineal de luz difusa que destaca por su pequeño formato y discreción.

Le luminaire linéaire très fin à lumière diffuse qui se distingue par son petit format et sa discrétion.

Un sottilissimo elemento lineare di luce diffusa, notevole per la discrezione e le misure contenute

Die feinste lineare Leuchte mit diffusem Licht, die sich durch ihr kleines Format und ihre Diskretion auszeichnet.

MINIMAL TRACK

## STICK 22 24V

Stick is a light fitting, designed for accent lighting, which underlines the verticality of the space where it is applied. The light buoyancy of such a light aesthetic piece is one of its greatest attractions.

Stick es una luminaria, concebida para iluminación de acento, que subraya la verticalidad del espacio donde se aplica. La liviana flotabilidad de una pieza de estética tan ligera es uno de sus mayores atractivos.

Stick est un luminaire conçu pour un éclairage ciblé, qui souligne la verticalité de l'espace où il est installé. La légère flottabilité d'une pièce à l'esthétique si délicate est l'un de ses plus grands atouts.

Stick è una lampada concepita per l'illuminazione d'accento, che sottolinea la verticalità dello spazio in cui viene applicata. La leggera galleggiabilità di un oggetto di design così leggero è una delle sue maggiori attrazioni.

Stick ist eine Leuchte, die für die Akzentbeleuchtung entworfen wurde und die Vertikalität des Raumes unterstreicht, in dem sie eingesetzt wird. Die leichte Beschwingtheit einer solch leichten, ästhetischen Leuchte ist einer ihrer größten Reize.



MINIMAL TRACK

## Black Foster Micro 24V

This linear luminaire has an excellent control of the light beam whose rays do not bathe the luminaire and are channelled directly to the exterior without touching the screen.

Esta luminaria lineal cuenta con un excelente control del haz de luz cuyos rayos no bañan la luminaria y se encauzan directamente al exterior sin tocar la pantalla.

Ce luminaire linéaire dispose d'un excellent contrôle du faisceau lumineux, dont les rayons n'inondent pas le luminaire et sont directement dirigés vers l'extérieur sans toucher l'écran.

Questo apparecchio di illuminazione lineare possiede un eccellente controllo del fascio, i cui raggi non lo bagnano, ma si incanalano direttamente verso l'esterno, senza toccare lo schermo.

Diese lineare Leuchte verfügt über eine ausgezeichnete Kontrolle des Lichtstrahls, dessen Strahlen die Leuchte nicht überfluten und direkt nach außen geleitet werden, ohne den Lampenschirm zu berühren.





# Minimal Track

SURFACE · SUSPENSION

LINE MICRO 24V  
—  
250 / 500 / 1000

2 / 5 / 9 W  
2700 / 3000 K  
330 - 1500 Lm  
113° BEAM  
52% LOR

BLACK FOSTER  
MICRO 24V 5

7 W  
2700 / 3000 / 4000 K  
775 - 850 Lm  
37° BEAM  
87% LOR

TOP MICRO 24V

2,1 W  
2700 / 3000 K  
190 / 210 Lm  
19 / 38° BEAM  
90 / 92 % LOR

IO MICRO 24V

4,7 W  
2700 / 3000 / 4000 K  
500 - 570 Lm  
20 / 40 / 54° BEAM  
86 / 88 % LOR

SIX XS 24V

3,5 W  
2700 / 3000 / 4000 K  
400 - 450 Lm  
17 / 23 / 34° BEAM  
86 - 90 % LOR

ALASKA 24V

3,5 W  
2700 / 3000 K  
390 / 410 Lm  
21° BEAM  
30% LOR

FIT 24V  
—  
FIT 20 / FIT 27

2,1 / 4,5 W  
2700 / 3000 K  
127 - 475 Lm  
12 - 54° BEAM  
81 - 88 % LOR

PLUS MICRO 24V

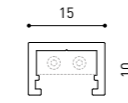
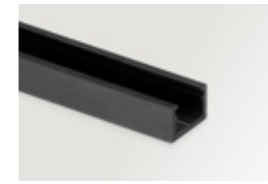
4,7 W  
2700 / 3000 / 4000 K  
500 - 570 Lm  
10 - 35° BEAM  
10 - 17 % LOR

STICK 22 24V

4,5 W  
2700 / 3000 K  
440 / 475 Lm  
22 / 37 / 46° BEAM  
81 - 84 % LOR

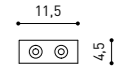


## 24V SYSTEM MINIMAL TRACK



MINIMAL TRACK 24V Profile 2m

A384-02-00- | N |



MINIMAL TRACK 24V Rubber Cable n x 1m

A384-00-01- | N |

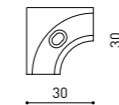
n = Total Length of System.

24V | Max. 4A

MINIMAL TRACK 24V Corner 90° 1 Plane

A384-00-02- | N |

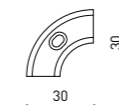
Cable Length = 35mm.



MINIMAL TRACK 24V Corner 90° 1 Plane Rounded

A384-00-03- | N |

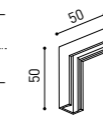
Cable Length = 35mm.



MINIMAL TRACK 24V Corner 90° 2 Planes

A384-00-04- | N |

Cable Length = 100mm.



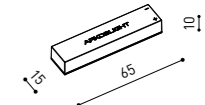
MINIMAL TRACK 24V End Cap

A384-00-05- | N |



MINIMAL TRACK 24V Connection Box

A384-00-06- | N |

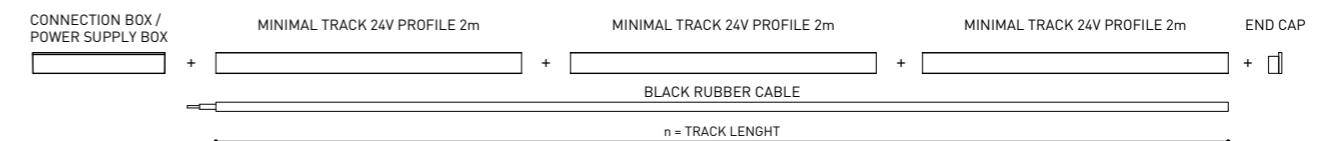
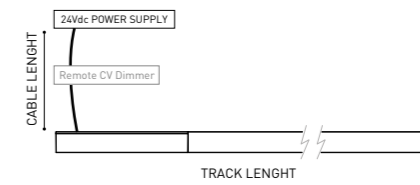


			P	V	D (A x B x C)
MINIMAL TRACK 24V Power Supply Box	ON/OFF	A384-00-07-   NT	40W	24V	280 x 30 x 24mm
		A384-00-08-   NT	100W	24V	280 x 30 x 24mm
220 V~   Included ON/OFF 24Vdc Power Supply.					
MINIMAL TRACK 24V Remote Power Supply	ON/OFF	0434-01-37	60W	24V	180 x 52 x 30mm
		0433-10-22	100W	24V	295 x 43 x 30mm
220 V~					
MINIMAL TRACK 24V Remote Constant Voltage Dimmer	DALI / Push	0433-01-32	DALI / Push	24V	181 x 42 x 20mm
		0433-01-33	CASAMBI	24V	172 x 42 x 20mm
		0434-01-64	WIFI	24V	105 x 44 x 23mm

24V

### DROP VOLTAGE TABLE

POWER [W]	CABLE SECTION [mm <sup>2</sup> ]	CABLE LENGTH (m)			
		<5	<10	<20	<30
40	0,75	30	30	30	30
	1,5	30	30	30	30
60	0,75	30	30	20	10
	1,5	30	30	30	20
100	0,75	20	10	X	X
	1,5	20	20	10	X



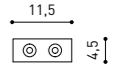
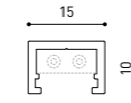
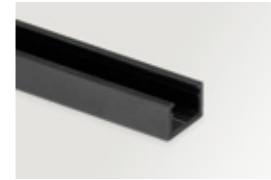
COLOUR | N ■ | NT ■ |

DIM OPTIONS PLEASE CONSULT

RAL ⓘ » 538



# 24V SYSTEM MINIMAL TRACK SUSPENSION



## MINIMAL TRACK 24V Suspension

Profile 2m

A384-02-00- | N |

Profile 2m Initial feed kit

A400-02-10- | N |

Profile 2m Middle feed kit\*

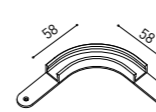
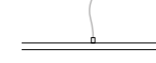
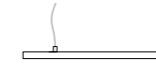
A400-02-20- | N |

\* Unidirectional Middle Feed.

MINIMAL TRACK 24V Suspension Corner 90°

A400-00-03- | N |

Cable Length = 85mm.



## MINIMAL TRACK 24V Suspension

Rubber Cable n x 1m

A400-00-01- | N |

n = Total Length of System.

24 V | Max. 4A

MINIMAL TRACK 24V Suspension Straight Joiner

A400-00-02- | N |

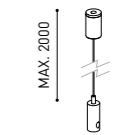
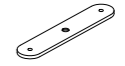
MINIMAL TRACK 24V Suspension Kit

A400-02-04- | N |

MINIMAL TRACK 24V Suspension End Caps

A400-00-05- | N |

Two End Caps Included

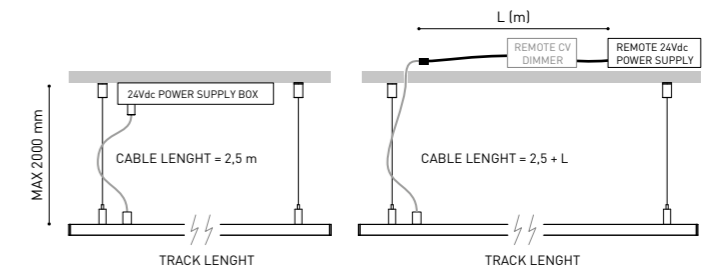


			P	V	D (A x B x C)
MINIMAL TRACK 24V Suspension	ON/OFF	A400-00-06-   NT	40W	24V	280 x 30 x 36mm
Power Supply Box		A400-00-07-   NT	100W	24V	280 x 30 x 36mm
MINIMAL TRACK 24V Remote Power Supply	ON/OFF	0434-01-37	60W	24V	180 x 52 x 30mm
		0433-10-22	100W	24V	295 x 43 x 30mm
MINIMAL TRACK 24V Remote Constant Voltage Dimmer		0433-01-32	DALI / Push	24V	181 x 42 x 20mm
		0433-01-33	CASAMBI	24V	172 x 42 x 20mm
		0434-01-64	WIFI	24V	105 x 44 x 23mm

220 V~  
240 V~

## DROP VOLTAGE TABLE

POWER (W)	CABLE SECTION (mm <sup>2</sup> )	CABLE LENGTH (m)			
		<5	<10	<20	<30
40	0,75	30	30	30	30
	1,5	30	30	30	30
60	0,75	30	30	20	10
	1,5	30	30	30	20
100	0,75	20	10	X	X
	1,5	20	20	10	X

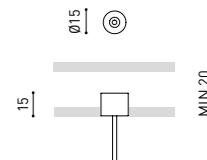


## OPTIONAL ACCESSORIES

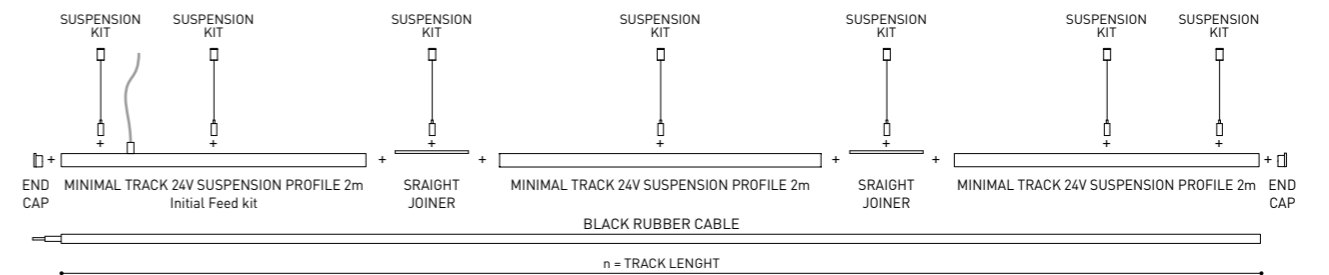
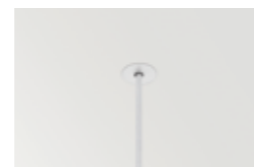
### WIRE TRIMLESS Accessories

Coaxial Trimless A023-00-03- | W | N |

FASTENERS NOT AVAILABLE.



## COAXIAL TRIMLESS



COLOUR | N ■ | NT ■ |

RAL ⓘ » 538

DIM OPTIONS PLEASE CONSULT

THE  
INVISIBLE  
BLACK



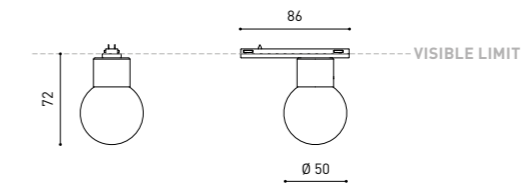
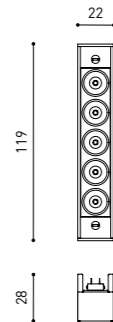
		P	CCT	I	Flux	LOR
<b>BLACK FOSTER Micro 24V 5</b>	<b>A415-20-10-   N  </b>	7W	2700K	500mA	775Lm	87%
	<b>A415-20-11-   N  </b>	7W	3000K	500mA	800Lm	87%
	<b>A415-20-12-   N  </b>	7W	4000K	500mA	850Lm	87%

24 V | IP20 | CRI>90 | L90B10 >60.000h



		P	CCT	I	Flux	LOR
<b>ALASKA 24V</b>	<b>A385-00-00-   N  </b>	3,5W	2700K	400mA	390Lm	30%
	<b>A385-00-01-   N  </b>	3,5W	3000K	400mA	410Lm	30%

24 V | IP20 | CRI>90 | L80B10 >60.000h



COLOUR | **N ■** | MATERIAL | AL | ABS+PC |

» PLEASE CONSULT

COLOUR | **N ■** | MATERIAL | AL | OPTICAL GLASS |

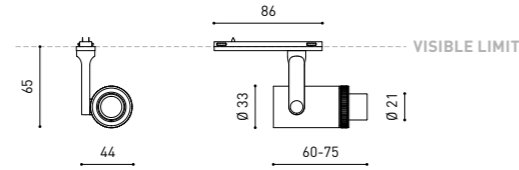
» PLEASE CONSULT



		P	CCT	BEAM	I	Flux	LOR	
PLUS Micro 24V	A388-00-00-	WT   NT	4,7W	2700K	10°-35°	400mA	500Lm	10-17%
	A388-00-01-	WT   NT	4,7W	3000K	10°-35°	400mA	520Lm	10-17%
	A388-00-02-	WT   NT	4,7W	4000K	10°-35°	400mA	570Lm	10-17%

24 V | III | IP20 | CRI>90 | L80B10 >60.000h

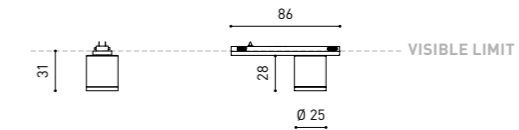
MacAdam Step 3 | INCL | MINIMAL TRACK | 355° | 180° | 10-35°



		P	CCT	BEAM	I	Flux	LOR	
TOP Micro 24V	A383-00-10-	WT   NT	2,1W	2700K	19°	700mA	190Lm	90%
	A383-00-11-	WT   NT	2,1W	3000K	19°	700mA	210Lm	90%
	A383-00-20-	WT   NT	2,1W	2700K	38°	700mA	190Lm	92%
	A383-00-21-	WT   NT	2,1W	3000K	38°	700mA	210Lm	92%

24 V | III | IP20 | CRI>90 | L80B10 >60.000h

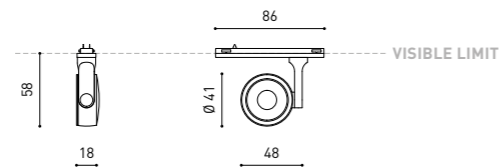
MacAdam Step 3 | INCL | MINIMAL TRACK | 19° / 38°



		P	CCT	BEAM	I	Flux	LOR	
SIX XS 24V	A389-00-10-	WT   NT	3,5W	2700K	17°	400mA	400Lm	90%
	A389-00-11-	WT   NT	3,5W	3000K	17°	400mA	420Lm	90%
	A389-00-12-	WT   NT	3,5W	4000K	17°	400mA	450Lm	90%
	A389-00-20-	WT   NT	3,5W	2700K	23°	400mA	400Lm	86%
	A389-00-21-	WT   NT	3,5W	3000K	23°	400mA	420Lm	86%
	A389-00-22-	WT   NT	3,5W	4000K	23°	400mA	450Lm	86%
	A389-00-30-	WT   NT	3,5W	2700K	34°	400mA	400Lm	88%
	A389-00-31-	WT   NT	3,5W	3000K	34°	400mA	420Lm	88%
	A389-00-32-	WT   NT	3,5W	4000K	34°	400mA	450Lm	88%

24 V | III | IP20 | CRI>90 | L80B10 >60.000h

MacAdam Step 2 | INCL | MINIMAL TRACK | 355° | 310° | 17° / 23° / 34°



OPTIONAL ACCESSORY

SIX High Chromatic LED ⓘ » 536

ACCESSORY & COLOURS AFFECT THE LIGHTING PARAMETERS NOT SOLD SEPARATELY

COLOUR | WT □ | NT ■ | MATERIAL | AL | OPTICAL PMMA |

COLOUR | WT □ | NT ■ | MATERIAL | AL | PC |

ⓘ » PLEASE CONSULT

COLOUR | WT □ | NT ■ | MATERIAL | AL | PC |

ⓘ » PLEASE CONSULT



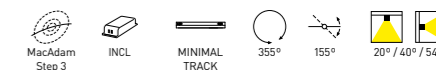
		P	CCT	I	Flux	LOR
LINE Micro 250 24V	A395-00-00-   N	2W	2700K	400mA	330Lm	52%
	A395-00-01-   N	2W	3000K	400mA	340Lm	52%
LINE Micro 500 24V	A395-10-00-   N	5W	2700K	400mA	820Lm	52%
	A395-10-01-   N	5W	3000K	400mA	840Lm	52%
LINE Micro 1000 24V	A395-20-00-   N	9W	2700K	700mA	1430Lm	52%
	A395-20-01-   N	9W	3000K	700mA	1500Lm	52%

24 V | III | IP20 | CRI>90 | L80B10 >60.000h

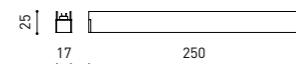


		P	CCT	BEAM	I	Flux	LOR
iO Micro 24V	A387-00-10-   WT   NT	4,7W	2700K	20°	400mA	500Lm	88%
	A387-00-11-   WT   NT	4,7W	3000K	20°	400mA	520Lm	88%
	A387-00-12-   WT   NT	4,7W	4000K	20°	400mA	570Lm	88%
	A387-00-20-   WT   NT	4,7W	2700K	40°	400mA	500Lm	86%
	A387-00-21-   WT   NT	4,7W	3000K	40°	400mA	520Lm	86%
	A387-00-22-   WT   NT	4,7W	4000K	40°	400mA	570Lm	86%
	A387-00-30-   WT   NT	4,7W	2700K	54°	400mA	500Lm	86%
	A387-00-31-   WT   NT	4,7W	3000K	54°	400mA	520Lm	86%
	A387-00-32-   WT   NT	4,7W	4000K	54°	400mA	570Lm	86%

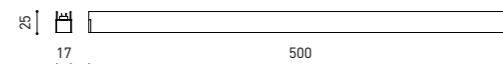
24 V | III | IP20 | CRI>90 | L80B10 >60.000h



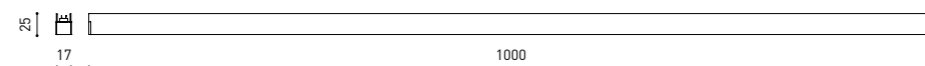
LINE MICRO 250 24V



LINE MICRO 500 24V



LINE MICRO 1000 24V



COLOUR | N ■ | MATERIAL | AL | PC |

((( ))) » PLEASE CONSULT

OPTIONAL ACCESSORIES

ACCESSORIES AFFECT THE LIGHTING PARAMETERS NOT SOLD SEPARATELY

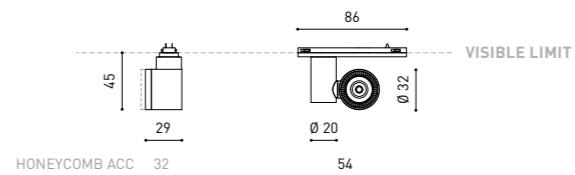
iO Micro 24V Beam Mixer Diffuser

A387-00-00



iO Micro 24V Anti-glare Honeycomb Louver

A387-00-01- | WT | NT |



COLOUR | WT □ | NT ■ | MATERIAL | AL | PC |

((( ))) » PLEASE CONSULT

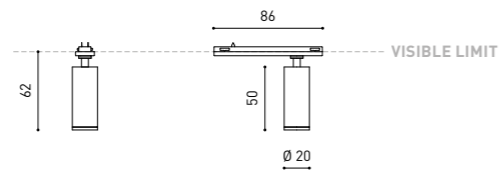


		P	CCT	BEAM	I	Flux	LOR
FIT 20 24V	A386-00-10-   WT   NT   G	2,1W	2700K	12°	700mA	127Lm	87%
	A386-00-11-   WT   NT   G	2,1W	3000K	12°	700mA	150Lm	87%
	A386-00-20-   WT   NT   G	2,1W	2700K	30°	700mA	127Lm	88%
	A386-00-21-   WT   NT   G	2,1W	3000K	30°	700mA	150Lm	88%
	A386-00-30-   WT   NT   G	2,1W	2700K	54°	700mA	127Lm	81%
	A386-00-31-   WT   NT   G	2,1W	3000K	54°	700mA	150Lm	81%

24 V | III | IP20 | CRI>90 | L80B10 >50.000h

MacAdam Step 3 | INCL | MINIMAL TRACK | 355° | 90° | 12° / 30° / 54°

FIT 20 24V

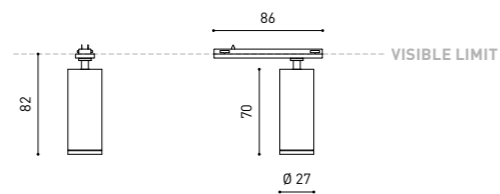


		P	CCT	BEAM	I	Flux	LOR
FIT 27 24V	A399-00-10-   WT   NT   G	4,5W	2700K	22°	400mA	440Lm	84%
	A399-00-11-   WT   NT   G	4,5W	3000K	22°	400mA	475Lm	84%
	A399-00-20-   WT   NT   G	4,5W	2700K	37°	400mA	440Lm	82%
	A399-00-21-   WT   NT   G	4,5W	3000K	37°	400mA	475Lm	82%
	A399-00-30-   WT   NT   G	4,5W	2700K	46°	400mA	440Lm	81%
	A399-00-31-   WT   NT   G	4,5W	3000K	46°	400mA	475Lm	81%

24 V | III | IP20 | CRI>90 | L80B10 >60.000h

MacAdam Step 2 | INCL | MINIMAL TRACK | 355° | 90° | 22° / 37° / 46°

FIT 27 24V



COLOUR | WT □ | NT ■ | G ■ | MATERIAL | AL | PC

((( ))) » PLEASE CONSULT



		P	CCT	Beam	I	Flux	LOR
STICK 22 24V	A410-01-10-   WT   NT   MG	4,5W	2700K	22°	400mA	440Lm	84%
	A410-01-11-   WT   NT   MG	4,5W	3000K	22°	400mA	475Lm	84%
	A410-01-20-   WT   NT   MG	4,5W	2700K	37°	400mA	440Lm	82%
	A410-01-21-   WT   NT   MG	4,5W	3000K	37°	400mA	475Lm	82%
	A410-01-30-   WT   NT   MG	4,5W	2700K	46°	400mA	440Lm	81%
	A410-01-31-   WT   NT   MG	4,5W	3000K	46°	400mA	475Lm	81%

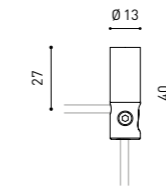
24 V | III | IP20 | CRI>90 | L80B10 >60.000h

MacAdam Step 2 | INCL | MINIMAL TRACK | 22° / 37° / 46°

OPTIONAL ACCESSORY

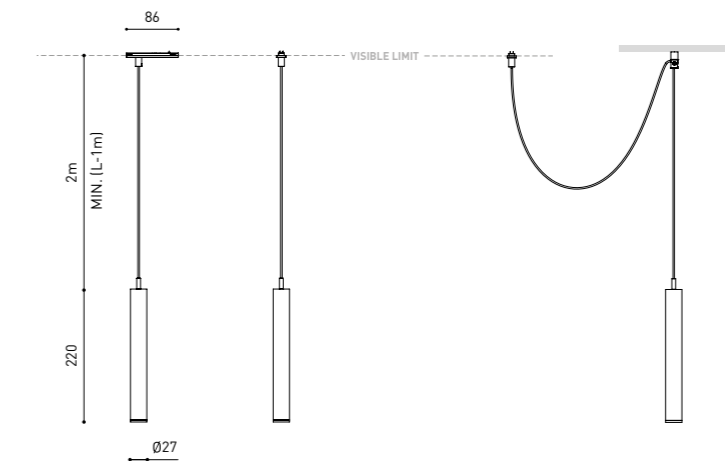
CORD Accessory

0223-00-00- | N |



STICK 22 24V












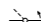

STICK 22 24V + CORD ACCESSORY



COLOUR | WT □ | NT ■ | MG ■ | N ■ | MATERIAL | AL | ABS+PC






((( ))) » PLEASE CONSULT

## Glossary

<b>P</b>	Power		LED lamp
<b>CCT</b>	Colour Temperature		CE marking
<b>I</b>	Current intensity		Class III
<b>Flux</b>	Gross luminous flux		Chromatic stability: MacAdam Steps
<b>BEAM</b>	Light beam width angle		Electronic equipment included
<b>L</b>	Length (in mm)		Rail Type
<b>D</b>	Dimensions (in mm)		Instalation type and light beam direction
<b>AL</b>	Aluminium		UGR (Unified Glare Rating) Visual comfort
<b>PC</b>	Polycarbonate		Made of
<b>LOR</b>	Lumen Output Ratio. Ratio between the output flux of the luminaire and the output flux of the light source		Lens
<b>IPXX</b>	Sealing rating		Reflector
<b>CRI</b>	Color rendering index		Diffuser
<b>PMMA</b>	Polymethyl methacrylate		Tilting angle
<b>V</b>	Power supply output voltage		Rotation angle

## Colours

The lighting values indicated for each ref. code correspond to the results obtained from the tests carried out on the first mentioned colour of the list.

	N   Matt black = RAL 9005
	NT   Textured black = RAL 9005
	WT   Textured white = RAL 9016
	G   Gold = RAL 1036
	MG   Metallized Gold. RAL not available. Electrolytic bath

## Special LED

### FOR COMMERCIAL PRODUCT SHOWCASING

For some of its products, Arkoslight offers the possibility to provide them with a special LED, designed to create an illumination focused on visually promoting goods or products for commercial purposes. It is a high chromaticity LED, capable of identifying the colour shades that produce a positive psychological perception of the illuminated object.

This special LED lighting source offers a much more attractive and intense colour range than a conventional LED, besides being much wider. Technically, this is possible thanks to a special LED setting that includes a «special saturation parameter», capable of highlighting the objects colours and materials in such a way that they seem more attractive within the visible light spectrum. To achieve this performance, in each case, the appropriate COB and specific phosphor coating are carefully selected.

# ARKOSLIGHT®

Calle N · Pol. Ind. EL OLIVERAL  
46394 Ribarroja del Turia · Valencia (Spain)  
Tel. +34 961 667 207 · Fax +34 961 667 054  
info@arkoslight.com · www.arkoslight.com  
France: +33 182 885 200 · Italia: +39 02 9475 0007  
Deutschland: +49 22 182 829 313





LIGHT&LIFE  
— DESDE 1984 —